



Annual Report

2024

Copyright © 2025 Africa Research and Impact Network (ARIN)
All rights reserved. arin-africa.org

TABLE OF CONTENTS

Foreword	02
Impact and Outreach	04
Stakeholder engagement in 2024	06
2024 Highlights and Achievements	11
Flagship Initiatives	15
Key Research Portfolio and Thematic Focus	19
Policy Engagements and Advocacy	32
Capacity Building	40
ARIN at COP 29	44
Staff Wellness and Team Cohesion	46
2024 Publications	50
2024 Supporters	53



01 FOREWORD FROM THE EXECUTIVE DIRECTOR

Foreword

2024 marked a defining year for the Africa Research and Impact Network (ARIN). As I reflect on our journey, I am inspired by how far we have advanced not only in driving cutting-edge research but also in positioning ARIN as a hub for African-led knowledge and solutions in an increasingly complex global landscape.

At ARIN, we believe research must be more than ideas on paper; it must serve people, strengthen systems, and shape policies that speak to Africa's realities. Guided by this conviction, our 2024 agenda placed emphasis on transdisciplinarity, inclusivity, and impact. From advancing climate-health linkages and urban resilience to pioneering adaptation metrics and decolonial knowledge production, we worked to ensure research remained relevant, practical, and transformative.

Among the year's most significant milestones was the launch of the Consultative Platform on Climate and Health in Africa (CAPCHA), a pioneering effort to bridge the evidence gap at the intersection of climate change and health. Equally transformative was the unveiling of the Locally Led Adaptation Metrics for Africa (LAMA) dashboard, which is already enabling communities and policymakers to co-create adaptation indicators that respond to local needs while aligning with national and global frameworks. The establishment of the ARIN Press provided a dedicated platform for publishing African-led research, while our Mini-Grants and Science-Policy Fellowship programs strengthened the pipeline of next-generation scholars, ensuring Africa's voices are centered in global debates.

Our convening power continued to set us apart. In 2024, ARIN engaged diverse actors through flagship dialogues, including the 4th ARIN International Conference on Climate and Health, as well as through weekly Friday Reviews that nurtured peer-to-peer learning. Through partnerships with institutions like Taylor & Francis, Johns Hopkins University, the World Resources Institute, and multiple grassroots organizations, ARIN extended its influence across disciplines, geographies, and governance levels.

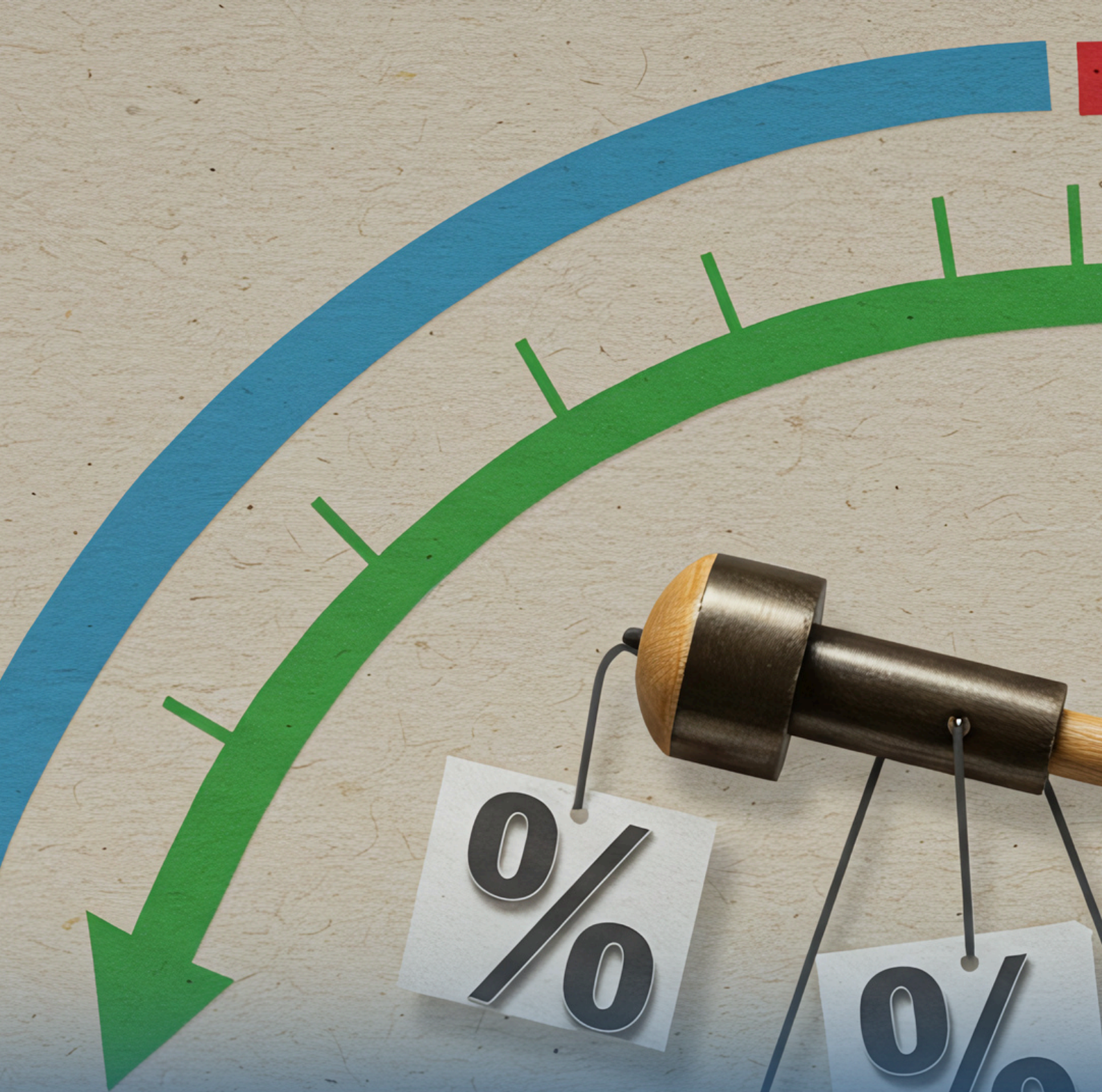
Beyond outputs, our impact was visible in outcomes: strengthened evidence-informed policies, empowered grassroots champions, and amplified African contributions to global forums such as COP29 and the IPCC pre-scoping process. We were also honored to see our team and fellows receive recognition nationally and internationally for their leadership in research, innovation, and advocacy.

As we transition into 2025, we remain clear-eyed about the challenges ahead, rising climate risks, persistent inequities in knowledge systems, and constrained financing for adaptation. Yet we are equally resolute in our mission: to drive Africa-led solutions, foster collaboration, and ensure that African scholarship is not merely included but is leading in shaping global transformation.

I extend my deepest gratitude to our staff, fellows, partners, and supporters. Your commitment makes this journey possible. Together, we will continue to advance a research ecosystem that is open, inclusive, and distinctly African in its values, leadership, and impact.

Dr. Joanes Atela - Executive Director, ARIN





**02 IMPACT AND
OUTREACH!**

Impact and Outreach!

In 2024, ARIN's work moved beyond research outputs to measurable outcomes that are shaping communities, influencing policies, and amplifying Africa's voice globally.

Strengthening Evidence for Policy and Practice

- **Launched CAPCHA**, creating the first Africa-wide consultative platform on climate and health. This platform has already convened over **500 stakeholders** across 20+ countries, informing national health adaptation strategies and contributing to the global Climate & Health Fellowship initiative.
- **Rolled out the LAMA dashboard**, integrating **50+ adaptation indicators** and documenting **20 impact stories** from grassroots communities, bridging the gap between local realities and global climate reporting frameworks.

Empowering the Next Generation

- Through the **Science-Policy Fellowship**, ARIN supported over **200 fellows**, many of whom gained visibility at high-level platforms such as COP29 and the UNFCCC. Several fellows were appointed to expert advisory boards, demonstrating the program's influence on career trajectories.
- The **Mini-Grants Scheme** disbursed grants of up to USD 5,000 to **early- and mid-career researchers** from across Africa, resulting in actionable studies on SDG governance, adaptation accountability, and climate-resilience innovations.

Grassroots Impact and Community Leadership

- Partnering with the **Grassroot Impact Center (GIC)** and the **Lake Region Economic Bloc**, ARIN trained over **200 grassroots champions** on climate adaptation, equipping them with knowledge on finance, gender inclusion, and technology. These champions are now co-designing resilience strategies for agriculture and fisheries-dependent communities.
- Collaboration with **WRI** and local leaders in Nairobi's informal settlements resulted in actionable policy recommendations for addressing flooding, directly benefiting thousands of residents in vulnerable urban areas.

Global Leadership and Advocacy

- ARIN contributed to shaping the **IPCC AR7 agenda** and influenced adaptation metrics discussions under the **UAE Belem Work Programme** at COP29.
- Through **ARIN Press**, we published and disseminated African-led research globally, enhancing the visibility of evidence-based solutions from the continent.

Recognition and Excellence

- ARIN staff and fellows received prestigious recognitions, including the Africa Queen of Energy Award, keynote speaking invitations for global learning platforms, and institutional accolades for research excellence and innovation.





03 STAKEHOLDER ENGAGEMENT IN 2024

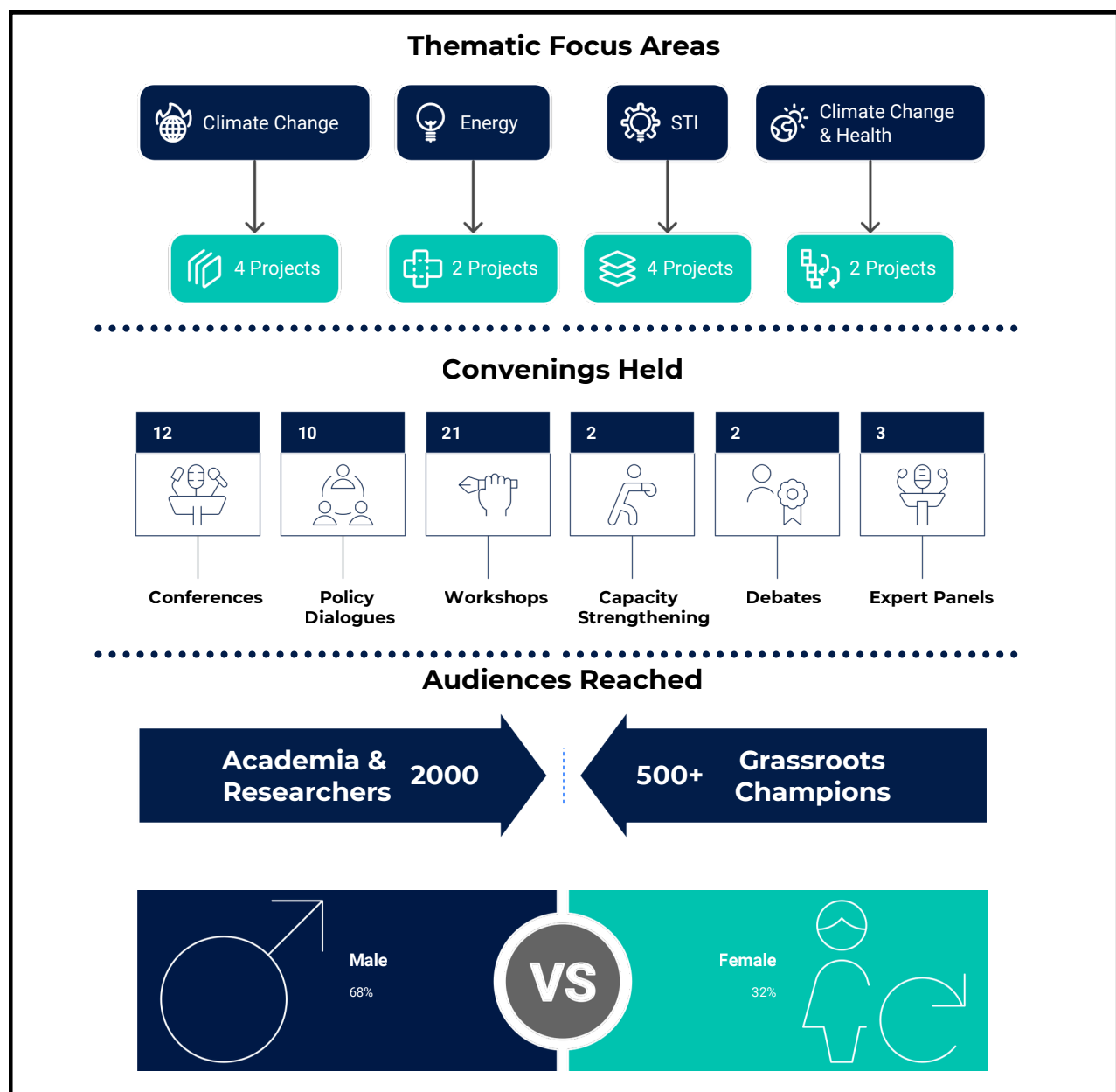
Stakeholder engagement in 2024

In 2024, ARIN's work moved beyond research outputs to measurable outcomes that are shaping communities, influencing policies, and amplifying Africa's voice globally.

Strengthening Evidence for Policy and Practice

- i.) Consolidating evidence from diverse African contexts and leveraging it to support policy development and capacity building.
- ii.) Promoting research excellence and the sharing of best practices in research and impact.

ARIN identifies and nurtures key research talents, fostering flexible and innovative contributions to Africa's research transformation, policy analysis, and capacity building. It provides a peer review platform where best research and impact practices from various African contexts are shared, profiled, and leveraged to inform transformative policy action. ARIN has pioneered groundbreaking research in climate change, knowledge management, science, technology, and innovation.



Strategic Focus

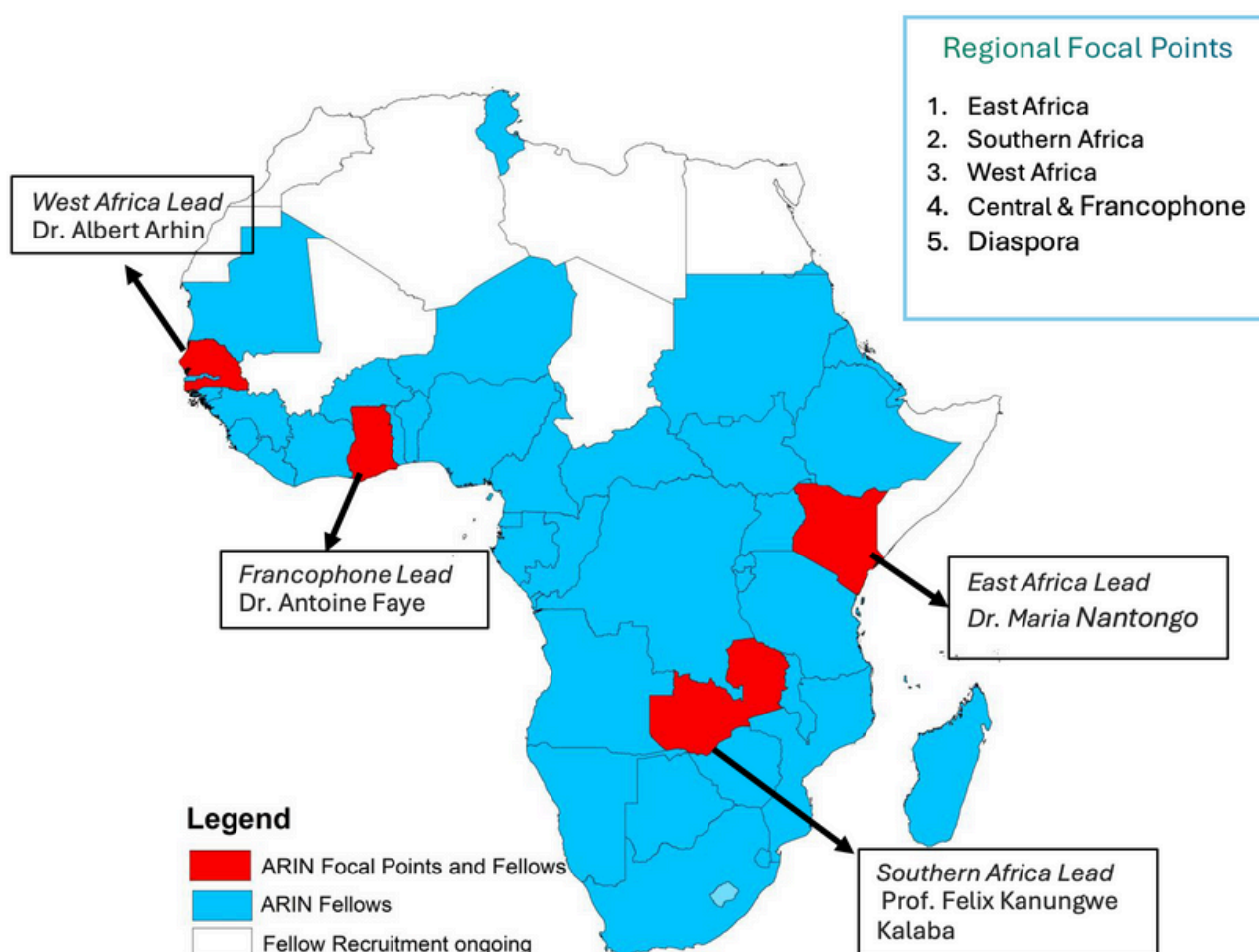
Our strategic focus positions ARIN as a vital player in amplifying Africa's voice in global research and development dialogues while driving transformative change on the continent.

1. **Advancing Research Excellence:** ARIN builds the capacity for African researchers to produce high-quality, impactful studies that address local, national, and regional priorities, and facilitates collaboration between researchers, policymakers, and practitioners to enhance the credibility and utility of research outputs.
2. **Enhancing Policy and Practice Influence:** ARIN bridges the gap between research and policy decision-making, ensuring that evidence-based strategies are adopted by governments, private sector actors, and civil society. By facilitating the co-creation of knowledge through partnerships with stakeholders, ARIN ensures that research addresses real-world challenges. Through dialogues, workshops, and conferences, the network disseminates findings and promotes the uptake of evidence in policymaking.
3. **Capacity Building and Mentorship:** Through initiatives such as the ARIN Fellowship, the network nurtures emerging scholars and thought leaders in Africa, equipping them with the skills and expertise to conduct impactful research.
4. **Promoting Inclusive and Collaborative Networks:** ARIN fosters partnerships with institutions across Africa and globally, creating synergies to address shared development challenges. The network promotes diversity and inclusion in research, ensuring that marginalized voices are represented in knowledge production and policy influence.
5. **Climate Action and Sustainability:** ARIN drives innovative research and sustainable solutions in climate change adaptation, resilience, and sustainable development. It supports evidence generation to strengthen Africa's role in global climate governance.
6. **Impact-Oriented Research:** ARIN encourages research designs that prioritize measurable societal impacts, aligning research agendas with the Sustainable Development Goals (SDGs) and Agenda 2063.



Strategic Presence in Africa

Spread across four African regions, ARIN's presence is amplified by its commitment to training and mentoring the next generation of African researchers. By convening workshops, webinars, and conferences, and with designated focal points for each region, ARIN serves as a platform for continuous learning and innovation across the continent. Leveraging technology, ARIN maintains a vibrant virtual presence, connecting stakeholders from all corners of Africa and beyond. With a physical office in Nairobi, Kenya, serving as a central hub for coordination, collaboration, and capacity building, its virtual presence facilitates widespread participation in programs, thereby ensuring accessibility and inclusivity.

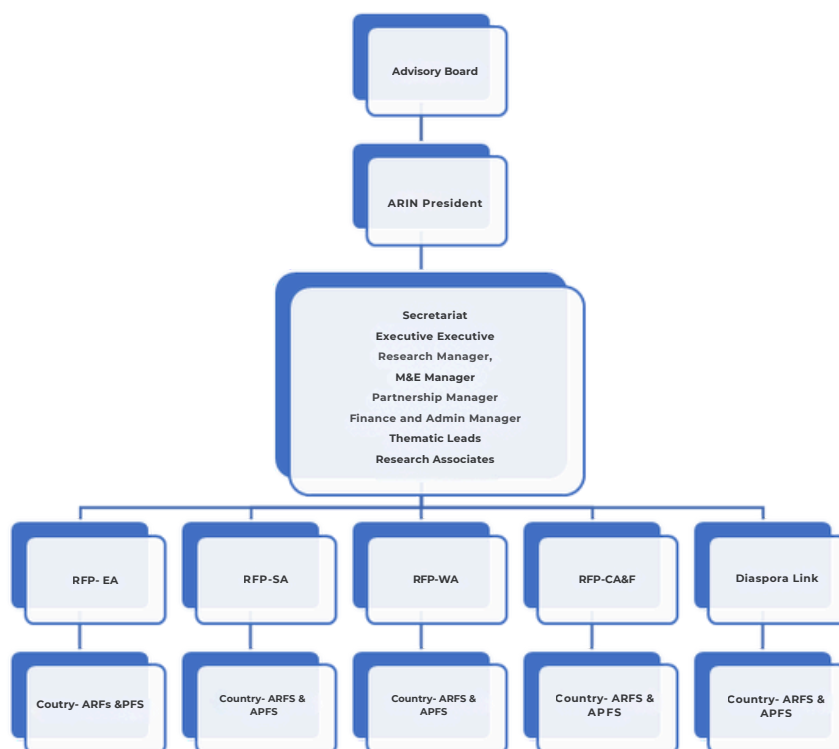


ARIN adopts a dynamic, multidisciplinary approach to addressing Africa's most pressing challenges. Its thematic areas are strategically aligned with the continent's development priorities and global sustainability goals. By identifying and leveraging top research talent, ARIN flexibly and innovatively advances research transformation, policy analysis, and capacity building across Africa.

The platform fosters the sharing, profiling, and application of best research and impact practices from diverse African contexts to inform transformative policy action. ARIN has pioneered path-breaking research in areas such as climate change adaptation, energy and clean cooking, climate change and health, pro-poor and inclusive urban resilience, and artificial intelligence.

Governance Structure

ARIN is governed by a diverse and dynamic body of professionals providing strategic direction, oversight, and governance to ensure ARIN achieves its mission of advancing research excellence and impactful solutions across Africa. The organizational organogram below illustrates a well-structured governance and operational framework designed to support coordination, research excellence, and impactful programming across Africa.



ARIN General Organogram



04 2024 HIGHLIGHTS AND ACHIEVEMENTS

2024 Highlights and Achievements

Strategic Partnership with Taylor and Francis

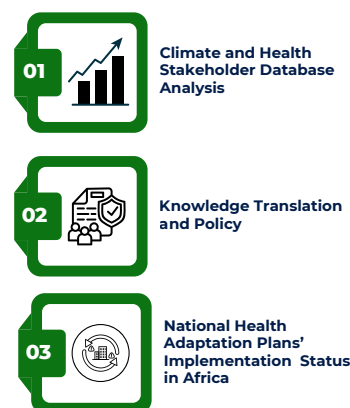
In June 2024, ARIN and **Taylor & Francis Group (T&F)** established a strategic partnership aimed at enhancing research collaboration, capacity building, and publication opportunities for African scholars. This collaboration encompasses several key initiatives such as mini-grants to provide financial support to African researchers, addressing both research excellence and publication costs. The partnership focuses on enhancing research visibility and publication opportunities for African scholars through initiatives such as capacity-building webinars, a Research Publishing Academy, and co-published book series. It also includes developing co-branded marketing strategies and hosting interactive sessions to foster collaboration and knowledge sharing among researchers, thereby advancing African research and its impact globally. Moreover, A six-month roadmap has been developed, featuring co-branded marketing strategies and interactive sessions to foster knowledge sharing and collaboration among researchers.

Launch of Consultative Platform on Climate and Health in Africa (CAPCHA)

Africa is highly vulnerable to climate change due to extreme weather, fragile socio-economic systems, and inadequate healthcare. The lack of context-specific data and research capacity hinders effective adaptation, while national policies often marginalize climate and health concerns. The Consultative Platform on Climate and Health in Africa (CAPCHA), launched in August 2024, aims to build a community to support informed decisions on Climate and Health (C&H) research and policy, and advocate for resilient, low-carbon health systems through science-policy engagement.



CAPCHA Components

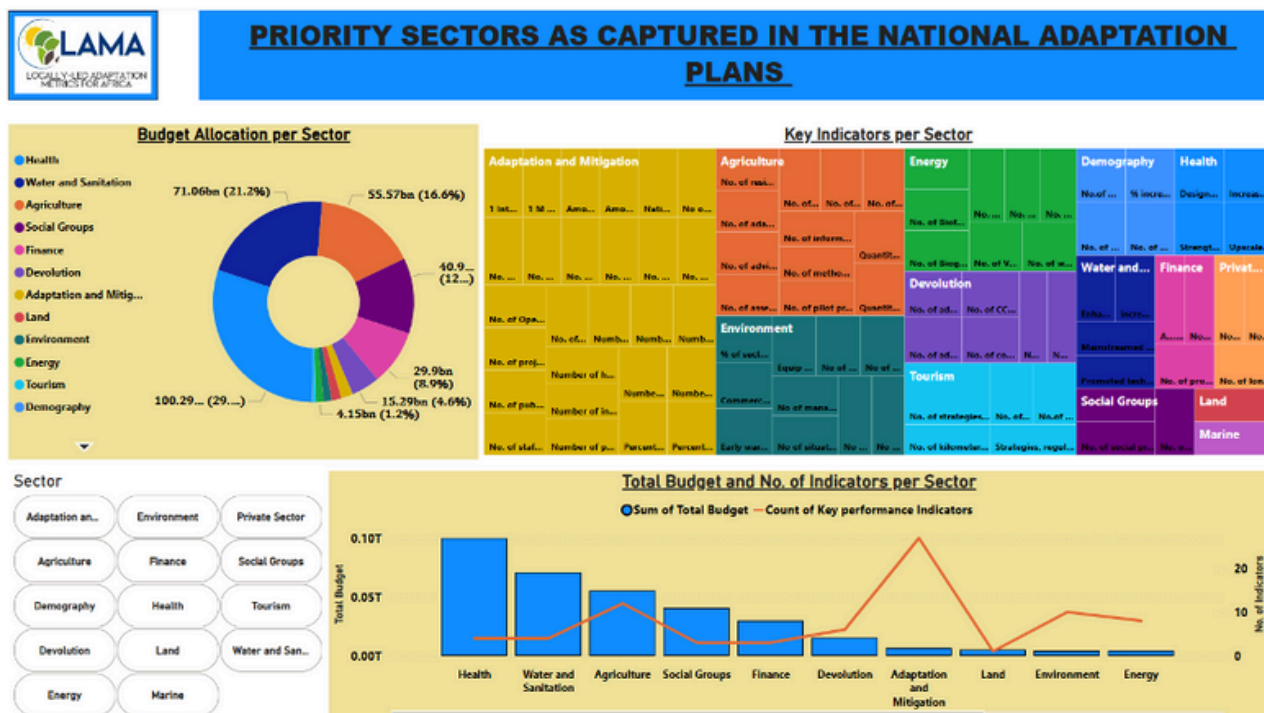


CAPCHA is dedicated to addressing Africa's climate-health challenges by fostering research, policy integration, capacity building, and advocacy. It focuses on creating centralized databases and dashboards for tracking the health impacts of climate change, organizing knowledge-sharing events such as webinars and conferences, and promoting innovative, multi-sectoral research collaborations to support sustainable development and public health improvement across the continent.

For more details on the CAPCHA, please visit the website: <https://bit.ly/3YKEsuP>

Launch of the LAMA platform

In December 2024, the Locally-led Adaptation Metrics for Africa (LAMA) research team launched a digital platform ([dashboard](#)) that will serve as a central hub for data visualization, analysis, and interaction. It will incorporate local, sub-national, national, and global indicators related to adaptation, climate, and weather. The platform will facilitate comparative analysis, enabling the co-creation of metrics that align local aspirations with broader adaptation policies and investments. Additionally, the dashboard will showcase impact stories from Locally Led Adaptations (LLA) initiatives across the continent.



A snippet of the dashboard : [link](#)

The LAMA Platform comprises five interconnected components that collectively support locally led adaptation (LLA) in Africa. The Interactive Dashboard serves as a central hub for visualizing and analyzing climate and adaptation data at multiple scales, while showcasing impact stories. The LLA Interventions Database captures and compares lessons from adaptation initiatives across the continent. A Tools and Framework Repository offers access to diverse methodologies for tracking progress and indicators. The Stakeholder Engagement Platform brings together key actors in adaptation to share insights and co-create knowledge products. Lastly, the Metrics Expert Group, composed of ten multidisciplinary experts, consolidates best practices and aligns local metrics with national and global frameworks, contributing to global adaptation goals and informing IPCC assessments.



Establishment of the ARIN Press

Established in 2024, the ARIN Press serves as a pioneering publishing platform dedicated to expanding the reach of the organization's research outputs. With a strong commitment to open-access publishing, ARIN Press enhances the visibility of ARIN's work, fosters interdisciplinary collaboration, and drives evidence-based decision-making for sustainable development across the continent. Several reports and articles have been submitted to this digital platform, focusing on themes such as the role of transdisciplinary research in addressing climate change and health challenges in Africa. These publications highlight ARIN's efforts to generate knowledge, shape policy, and promote change through evidence-based research.





05 FLAGSHIP INITIATIVES

Flagship Initiatives

The ARIN Mini-Grants Scheme

Acknowledging the ongoing financial challenges encountered by many promising African researchers with substantial potential, ARIN launched the ARIN Mini-grant and Mentorship Scheme in 2024 with the aim of tackling the lack of opportunities and budgetary constraints that impede comprehensive contextual research across various regions and countries in Africa.

The ARIN Mini-grants Scheme, offering grants between US\$2,000 and US\$5,000, aims to strengthen evidence-based policymaking in Africa by enhancing understanding of the science-policy interface and addressing gaps in evidence utilization. It also seeks to create a community of evidence leaders skilled in promoting evidence-based approaches and to advance African knowledge production through initiatives like book volumes and special issues, contributing to the continent's strategic development frameworks.

Mini-grant	Focus	Eligibility	Goals	Outputs
Accountable Adaptation Programme	Climate change adaptation in Africa	Early to mid-career researchers from the Global South	Research into novel accountability mechanisms	Up to eight small grants
Governing SDGs interactions	SDG governance	Researchers from the Global South	Identify gaps, challenges, and opportunities in SDG efforts	Webinars, seminars, monthly convenings, mentorship, book publication
Learning together to advance Evidence and Equity in policy making for achieving the SDGs (LEEPS)	Evidence-informed policymaking	Researchers from Africa	Strengthening EIP structures and capacity	Case studies on reproductive health and clean energy
Leveraging mathematical sciences for climate resilience solutions (Math4CCR)	Climate resilience solutions	Math4CCR champions	Build evidence on best practices in M-AI	Ten mini-research grants, presentations at conferences
BioCAM	Nature-based climate actions (NBCAs)	Researchers in East Africa and Central America	Develop methodologies for mapping NBCAs trends	Deep-dive studies, improve data collection



The ARIN Science-Policy Fellowship program

The ARIN Science-Policy Fellowship program brings together over 200 fellows from a diverse network of talented researchers and technocrats working across a range of fields including natural resource management, climate change, agriculture, forestry, energy, water, and urban development. This interdisciplinary community collaborates to generate robust evidence and share lessons learned across the African continent. The program emphasizes peer learning and the dissemination of transformative research and impact-driven practices.

At its core, the Fellowship seeks to identify and harness key research talents to contribute flexibly and innovatively to Africa's research and policy transformation. A strong commitment to inclusion and equity underpins all program activities, with deliberate efforts to engage women and girls, persons with disabilities, youth, and researchers from the continent's most vulnerable communities.

Under the program, several key milestones have been achieved, particularly in empowering fellows through meaningful project integration and enhancing their professional visibility. Many fellows have actively contributed as consultants in ARIN-led projects, bringing their expertise to complex research initiatives and significantly strengthening the program's implementation capacity. Beyond project work, ARIN has played a critical role in elevating the profiles of its fellows by nominating and sponsoring them to participate in high-level research and policy dialogues. Notably, fellows have taken part in prestigious global platforms such as the UNFCCC global climate change conferences, where they receive targeted mentorship and presented their research findings to influential international audiences. Furthermore, the ARIN Secretariat has strategically recommended outstanding fellows for membership in high-level advisory boards and expert committees, positioning them to shape policy and research agendas across Africa and beyond. These efforts underscore the program's commitment to not only building research capacity but also fostering leadership and visibility for emerging experts within the continent's knowledge and policy ecosystem.



The Friday Reviews: An ARIN Signature Since 2020

The Friday Reviews have proudly been a flagship initiative of ARIN since the year 2020. Held every Friday from 3:00 PM to 4:30 PM, this dynamic platform provides African researchers and scholars with the opportunity to present their ongoing research and preliminary findings, discuss research outputs, and strengthen evidence-based approaches across various disciplines. These sessions foster a collaborative environment where peers critique the work and offer constructive suggestions for refinement and advancement. This interactive weekly forum promotes peer learning, helping to identify research gaps and critical priorities within the African context.

Each session is anchored around a specific thematic area. In 2024, several ARIN Fellows led particularly engaging and thought-provoking sessions, contributing to meaningful knowledge exchange and increased visibility for emerging research, specifically focused on Climate Change and Health, Climate Change Adaptation and Climate Finance, Evidence-Informed Policy, Just Energy Transition, SDG Interactions, and Climate Change and Land Governance. These thematic discussions continue to elevate the quality and impact of African-led research and its contribution to transformative policy and practice on the continent. All the recordings are available on our [youtube channel](#).



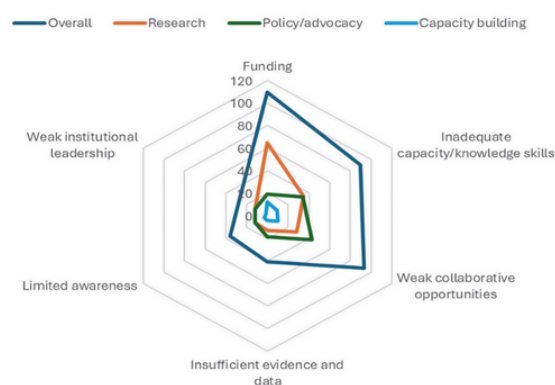


06 KEY RESEARCH PORTFOLIO AND THEMATIC FOCUS

Key Research Portfolio and Thematic Focus

Climate Change and Health

In 2024, ARIN emerged as a significant contributor to climate change and health research, advancing important discussions across the continent. A major milestone was achieved through ARIN's Wellcome Trust-funded study, *Consultation on Communities of Practice for Transdisciplinary Research and Action in Climate Change and Health in Africa*, which concluded in 2024. This pioneering research generated a technical report ([link](#)) that underscores the urgency of prioritizing health in climate change policy and planning, and advocates for integrated approaches to building national health resilience.



Priority Needs/Barriers to Transdisciplinary Climate and Health Research and Action (n=198). Key stakeholder needs were identified through an online survey of 198 respondents. Funding emerged as the most pressing need for the majority of participants



Significant to the C&H programme was the launch of the Consultative Platform on Climate and Health in Africa ([CAPCHA](#)) in August 2024, with an aim to build a community to support informed decisions on C&H research and policy, and advocate for resilient, low-carbon health systems through science-policy engagement. CAPCHA is dedicated to addressing Africa's climate-health challenges by fostering research, policy integration, capacity building, and advocacy. It focuses on creating centralized databases and dashboards for tracking the health impacts of climate change, organizing knowledge-sharing events such as webinars and conferences, and promoting innovative, multi-sectoral research collaborations to support sustainable development and public health improvement across the continent.

The launch of CAPCHA inspired the theme for the 4th Annual ARIN International Conference, which became the 1st ARIN Climate & Health Conference themed *Bridging Knowledge Gaps: Promoting Transdisciplinarity for Climate and Health Resilience*. This was held virtually in November 2024, the conference highlighted the pressing need for multi-sectoral and multi-level collaboration to address the climate crisis and its extensive health implications.

The African Population Cohort Consortium

ARIN played a key role in the inaugural meeting of the African Population Cohort Consortium (APCC), held in Cape Town, South Africa, from May 27-28, 2024. The APCC is a collaborative effort aimed at establishing a network of large, longitudinal population cohorts across Africa. This initiative holds immense potential for advancing research on population health and wellbeing, climate change impacts, and the effectiveness of universal health coverage across the continent.



“

Meaningful stakeholder engagement is crucial for the success of the APCC. By incorporating the diverse perspectives and needs of all stakeholders, the APCC can ensure its research agenda is relevant, its findings are widely disseminated, and its impact is maximized.”

Dr. Atela

”

The successful launch of the APCC paves the way for a more comprehensive understanding of population health in Africa. ARIN, through its expertise in stakeholder engagement and research capacity building, remains committed to supporting the APCC's efforts and ensuring its positive impact on the continent.

Climate and Health Convenings

In addition to research, ARIN actively engaged with partners and networks that support transdisciplinary approaches aligning with the resilience goals of grassroots communities whose healthcare systems are affected by climate change. From participation in key C&H events such as the Africa Population Cohorts Consortium (APCC) Conference in Cape Town, where the Africa Population Cohort Blueprint was launched, to KEMRI's 3rd Health and Climate Change Scientific Conference on Advancing Global and Regional Health Climate Action held in Kenya, and The inaugural Climate and Health Africa Conference (CHAC 2024) held in Zimbabwe, ARIN's efforts to explore inclusive engagement strategies and examine the intersection of climate and health outcomes in vulnerable populations were prominently recognized.



Ann Irungu, ARIN C&H expert representing ARIN at various events

In May 2024 at the Climate Change and Health International Conference organized by Johns Hopkins University in Washington, D.C., ARIN entered into an agreement to establish a global **Climate and Health Fellowship** led by Johns Hopkins University, structured around regional Centers of Excellence. ARIN, in partnership with the African Population and Health Research Center (APHRC), was entrusted with developing and leading the African Centre. This center will serve as a hub for training and support, offering ARIN fellows and Secretariat staff access to mentorship, technical training, and international exchange opportunities, including visits to Johns Hopkins University. This initiative marks a significant step toward advancing Africa's role in the global climate and health agenda.



Dr Joanes Atela at Johns Hopkins University

Climate Action and Sustainability

At ARIN, Climate Action and Sustainability research focuses on advancing African-led, evidence-informed responses to the global climate crisis. The program promotes transdisciplinary collaboration, enabling researchers, policymakers, and grassroots actors to co-create context-relevant solutions that enhance resilience, equity, and sustainability across African communities. Through projects spanning locally-led adaptation, just energy transitions, and nature-based solutions, ARIN supports transformative change that aligns with global commitments such as the Paris Agreement and the Sustainable Development Goals, while grounding action in African realities and innovation.

Locally-led Adaptation Metrics

Through the Locally Led Adaptation Metrics for Africa (LAMA) research, ARIN is committed to advancing Locally Led Adaptation (LLA) as a transformative approach to building climate resilience in vulnerable communities. A key focus of this initiative is the development of robust and inclusive metrics to measure and report on the effectiveness of LLA interventions. By co-producing these metrics with local stakeholders, including vulnerable groups, the project ensures their relevance, practicality, and inclusivity in decision-making processes. The development and launch of the LAMA [dashboard](#) in 2024 was a key milestone to fostering learning and consolidation of locally led adaptation indicators across Africa.

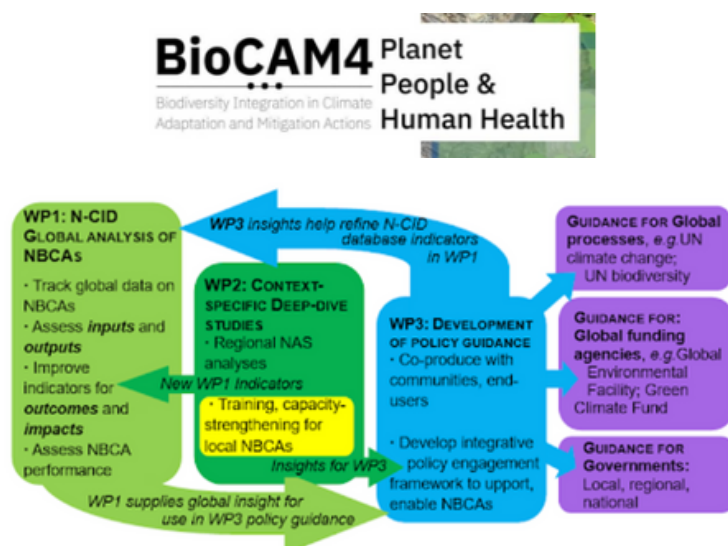


The LAMA Platform comprises five interconnected components that collectively support locally led adaptation (LLA) in Africa. The Interactive Dashboard serves as a central hub for visualizing and analyzing climate and adaptation data at multiple scales, while showcasing impact stories. The LLA Interventions Database captures and compares lessons from adaptation initiatives across the continent. A Tools and Framework Repository offers access to diverse methodologies for tracking progress and indicators. The Stakeholder Engagement Platform brings together key actors in adaptation to share insights and co-create knowledge products. Lastly, the Metrics Expert Group, composed of ten multidisciplinary experts, consolidates best practices and aligns local metrics with national and global frameworks, contributing to global adaptation goals and informing IPCC assessments.

By convening stakeholders engaged in LLA initiatives, the platform will facilitate the sharing of experiences, tools, and indicators, ultimately developing locally led and inclusive frameworks and data to inform the Global Goal on Adaptation (GGA) and the Global Stocktake (GST).

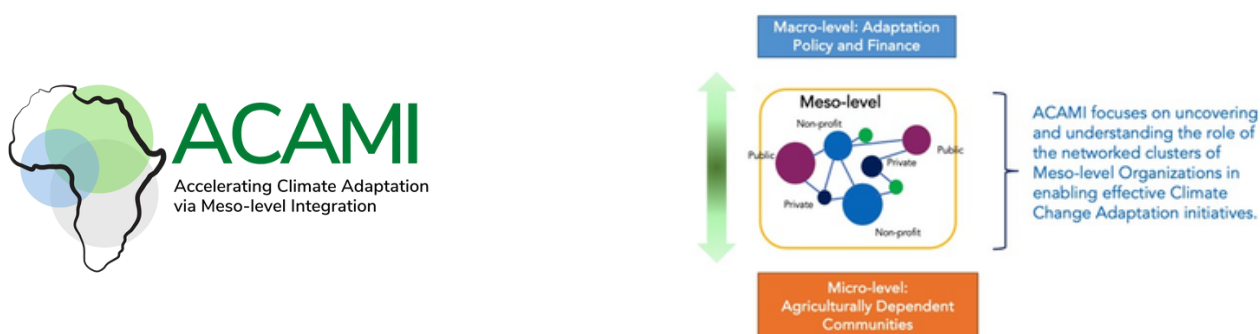
Nature-Based Conservation Areas

The launch of the *Biodiversity Integration in Climate Adaptation and Mitigation Actions for Planet, People, and Human Health (BioCAM4)* research project took place at the German Development Institute (IDOS) in Bonn, Germany in June 2024 at the sides of UNFCCC's 60th SB/SABSTA conference. Co-led by ARIN's Executive Director, Dr. Joanes Atela, the research program brings together experts to explore the role of Nature-Based Conservation Areas (NBCAs) in addressing pressing global issues. BioCAM4 centers around collaborative research that explores the role of NBCAs in promoting planetary health. NBCAs cover a wide range of protected areas, including national parks, biosphere reserves, and local conservation areas. By examining the effectiveness of NBCAs in addressing environmental, social, and health concerns, BioCAM4 aims to develop innovative solutions that benefit both human and ecological well-being.



Accelerating Climate Adaptation

To address the increasing threat to Kenyan pastoral communities by climate change impacts such as droughts, floods, and shifting weather patterns that jeopardize traditional livelihoods, the *Accelerating Climate Adaptation via Meso-level Integration (ACAMI)* research has been working to address the critical gap that exists at the meso-level, the bridge between local communities and national policies. The research team is developing tools and approaches that will help ensure that the diverse roles, capacities and functions of these organizations are leveraged effectively in support of more resilient and sustainable livelihoods for the men and women in farming communities across Africa.



Just Energy Transitions

In pursuit of Sustainable Development Goal 7 (ensuring access to clean and affordable energy), and with the need for accelerated global climate action in mind, ARIN focuses on meeting Africa's energy access needs with a step-change investment in renewable energy through the Operationalising a Just Transition in Africa (OJTA) research. The manner and means by which these investments will be achieved provide myriad pathways. The considerations of justice within energy transitions, the socioeconomic implications for both energy and non-energy sectors and the role of finance in enabling or inhibiting scaled clean energy access make for timely enquiry.



Under the OJTA initiative, a learning and exchange forum was held on 28 June 2024. The hybrid forum brought together researchers, policymakers, finance practitioners, and early-career professionals to explore pathways for embedding justice into Africa's renewable energy transitions. Participants engaged in thematic sessions, including the pivotal roles of data,

unlocking renewable energy potential, clean cooking, forestry, and energy efficiency, in advancing equitable access to clean energy. Complementing these discussions, a peer-reviewed blog series was launched to highlight key insights and spread learnings across national, regional, and continental scales.

You can follow the series and updates here: [OJTA Blog Series – ARIN](#)

Africa LEEPS

ARIN co-leads the Evidence Informed Policy making in Africa under the Africa LEEPS partnership - Evidence Informed Policymaking (EIP) project (Anglophone hub), led AFIDEP and in collaboration with the African Institute for Health Policies and Health Systems, Nigeria, and the School of Gender and Women Studies, Makerere University. This initiative addresses the observed gap in translating high-quality information into effective interventions, as highlighted during the COVID-19 pandemic, by offering training on EIP institutionalization and launching a small grant program. The aim is to enhance the capacity of relevant fellows across Africa to understand and contribute meaningfully to the EIP agenda.

An EIP sensitization training has been conducted; to create awareness among the fellows on the EIP project and its objectives and capacity build them. This was followed by a two-week training with tailor-made modules on different aspects of Institutionalising Evidence in Africa. Fellows who successfully underwent the EIP training were invited to apply for the mentorship phase. About 10-15 mini grants will be issued on a competitive basis where fellows will be asked to apply and describe their topics of study. These trainees will be well placed to implement the mini-grants in line with the goals of the project and to enhance impacts not only in their institutions but also to capacity build others within their respective regions. The results will be consolidated to produce a book volume on EIP practices, innovations, and opportunities for scaling up.

At the 2024 EPA Forum held in Ivory Coast, ARIN and Africa LEEPS partners reviewed progress in integrating evidence into organizational decision-making. The session explored enablers, barriers, and goals at both initiative and partnership levels to inform future support. Participants assessed the partnership's impact, reaffirmed core values, discussed potential collaborations, and set second-year priorities for partner organizations.

The 2024 EPA Forum marked the fifth edition of this regional gathering of evidence, policy system stakeholders. Centered on the theme “Enhancing Evidence Ecosystems in Francophone Africa,” the forum underscored the importance of system strengthening and continuous learning in advancing evidence-informed decision-making. This edition was co-organized by Africa LEEPS and co-hosted by CIREs' Cellule d'Analyse des Politiques Économiques.



Effectiveness of climate adaptation

East Africa continues to experience the harsh realities of climate change, with recurring droughts, unpredictable floods, and rising sea levels disrupting lives and livelihoods. Despite significant investments and partnerships with global actors to advance adaptation efforts, many communities remain highly vulnerable—raising critical questions about the effectiveness of current approaches and the barriers that limit their impact.

To address these gaps, ARIN partnered with the UK's Foreign, Commonwealth & Development Office (FCDO) through the East Africa Research and Innovation Hub to conduct a groundbreaking regional study: *Assessing the Effectiveness of Climate Change Adaptation Interventions in East Africa*. Covering nine countries; Kenya, Tanzania, Uganda, Rwanda, Burundi, Ethiopia, Eritrea, Somalia, and South Sudan, the study evaluates the performance of existing adaptation strategies. Its findings will generate evidence-based insights to guide more effective policies, investments, and practices that strengthen resilience across the region.

Governing SDG Interactions

In 2024, ARIN advanced a flagship project aimed at supporting inclusive and effective implementation of the Sustainable Development Goals (SDGs) in East Africa. The initiative focuses on improving how SDG interactions are governed across sectors and governance levels. Managing these interactions remains a significant challenge, as resources and responsibilities for different goals are often fragmented, creating governance gaps.

This fragmentation increases the risk of “cherry-picking” certain goals, overlooking critical trade-offs, and missing opportunities for synergies. As a result, progress in one goal may undermine another, and valuable opportunities for joint action can be lost. To address these challenges, the project explores mechanisms that foster alignment between public and private sector actors, ensuring that diverse priorities and interests can converge toward shared outcomes.

By studying alignment and governance mechanisms, ARIN seeks to transform fragmented efforts into a more inclusive and effective polycentric governance system, one that enables trade-offs to be managed, synergies to be built, and the indivisible SDG agenda to be realized in practice.



Governing Nature-based Climate Solutions: Prospects for a Just Green Transition in Kenya

In 2024, ARIN deepened its partnership in the JUCAN project, led by the University of Copenhagen, to explore how Nature-Based Solutions (NbS) can address climate change, biodiversity loss, and community resilience in Kenya. While NbS are gaining traction globally and nationally as tools for carbon offsetting and ecosystem restoration, critical gaps remain in understanding their governance. ARIN's contribution focuses on sharing knowledge, convening policy dialogues, and amplifying the voices of local researchers through communication training and media engagement. This work seeks to ensure that NbS move beyond technical fixes and are grounded in just, inclusive, and empowering governance arrangements.

The project examines the governance of three NbS initiatives in Kenya, a country with both a legacy of environmental injustice and a strong dependence of rural communities on restored natural resources. By interrogating trade-offs and power dynamics in NbS design and implementation, JUCAN aims to generate evidence on how these solutions can contribute to a just green transition. The research directly advances SDG 13 (Climate Action), SDG 15 (Life on Land), and SDG 16 (Peace, Justice, and Strong Institutions), while contributing to Denmark–Kenya development cooperation objectives on green growth, inclusive governance, and citizen engagement.



The JUCAN project team at a training held in Diani

Pro-poor & Inclusive Urban Resilience

Globally, over two billion people in cities across low- to middle-income countries face multiple hazards, including floods, earthquakes, landslides, volcanic eruptions, and fires. These threats create cycles of destruction, disrupting lives and livelihoods. With urban areas expanding at an unprecedented pace, this number is projected to double to four billion by 2050. ARIN is deeply committed to addressing these pressing challenges.

The Tomorrow's Cities Urban Risk Hub



ARIN has been part of the Tomorrow's Cities research hub since February 2019, leading the Nairobi focused research. For context, the hub's mission has been to catalyse a transition from crisis management to multi-hazard, risk-informed planning and decision-making for cities in low- and middle-income countries and has been working in nine cities across the globe. Through the hub, opportunities for interdisciplinary research in Nairobi have been invaluable. Bringing together various disciplines such as fire and flood modeling, gender intersectionality, participatory planning, and community-led resilience initiatives under the common research agenda of Tomorrow's Cities has been rewarding. In today's interconnected world where risks and challenges are multifaceted, interdisciplinary research is essential.

Since 2023, ARIN has worked on implementing the Tomorrow's Cities Decision Support Environment (TCDSE) in Nairobi, which is a framework intended to support inclusive decision-making and governance processes that address urban risks. The TCDSE contributed to community-based approaches to city planning in Nairobi. Kibera, an informal settlement designated as a Special Planning Area (SPA), was used as a case study for visioning exercises related to risk-aware planning, capacity development, policy and decision-making support. An open access risk-informed urban planning tool focused primarily on flooding was also developed ([accessible here](#)).

On the 18th and 19th of April 2024, ARIN, leading the Nairobi hub, successfully concluded an Action Planning Workshop followed by a Technical Knowledge Exchange Meeting with UN-Habitat. The discussions at these events consolidated key lessons and opened concrete pathways for advancing disaster risk reduction at local, national, and regional levels. Hosted at the United Nations Office in Nairobi, with support from UN-Habitat and the participation of several key actors, the event showcased both the process and results of applying the TCDSE framework, specifically adapted to Nairobi's context. The events also marked the conclusion of the Tomorrow's Cities initiative after five years of successful implementation.

The Action Planning Workshop brought together decision-makers, urban planning experts, practitioners, and stakeholders to present and reflect on the outcomes of this collaborative process. By emphasizing inclusive and participatory approaches, the event underscored the critical role of community engagement in shaping urban planning and strengthening disaster risk reduction strategies.





The event was made possible through the dedicated efforts of the ARIN team; Dr. Joanes Atela, Victoria Chengo, Nancy Mutwii, Ezekiel Gogo, Leah Aoko-Otieno, Washington Kanyangi, and Charles Tonui, in collaboration with UK-based partners Prof. Mark Pelling, Thaisa Comelli, Emin Mentese, and UN-Habitat's Mark Kuyo Ojal.

The Tomorrow's Cities team at ARIN also supported the deployment of the TCDSE framework in Dar es Salaam, Tanzania, and Nakuru, Kenya.

Throughout the five years with the Tomorrow's Cities program, ARIN has cultivated strong partnerships with key urban planning stakeholders in government and beyond. This includes forging alliances with programmes such as the Building Climate Resilience of the Urban Poor (BCRUP), launched in 2023. As a result, ARIN is now positioned as a key research partner in the delivery of BCRUP in Kenya.

Addressing Flood Vulnerability in Nairobi's Informal Settlements

ARIN, in collaboration with the World Resources Institute (WRI), implemented the project “The Causes and Impacts of the April–May 2024 Long Rain-related Flooding in the Under-Served Informal Settlements and Vulnerable Communities in Nairobi City.”

Nairobi has long faced recurrent flooding, exposing weaknesses in urban planning, drainage, and disaster response systems. During the March–May 2024 long rains, flash floods caused devastating losses across the city, with informal settlements such as Kibera, Mukuru, and Mathare disproportionately affected. Inadequate infrastructure, poor drainage, and limited preparedness left thousands of residents vulnerable, resulting in severe socio-economic consequences including loss of property, disrupted livelihoods, increased health risks, and reduced access to essential services. This project highlighted the urgent need for comprehensive flood management strategies that combine infrastructure improvements, early warning systems, sustainable land use, stronger disaster preparedness, and effective cross-sectoral collaboration. Yet, critical policy gaps remain in both design and implementation.

Through this initiative, ARIN and WRI are developing a high-level policy brief to provide actionable recommendations for local, regional, and national flood risk management. The brief will synthesize evidence, spotlight best practices, and propose targeted interventions to reduce future flood risks. Central to this work is a focus on protecting the most vulnerable populations in Nairobi's informal settlements while building a more resilient and sustainable urban future.

Science, Technology, & Innovation

In 2024, ARIN continued to advance its mission of strengthening Africa's research and innovation ecosystems by positioning science, technology, and innovation (STI) at the heart of sustainable development. Recognizing that Africa's future resilience and competitiveness depend on its ability to generate, adapt, and scale scientific knowledge and technological solutions, ARIN's STI work in 2024 focused on evidence generation, policy influence, and capacity strengthening.

AI for a Resilient Africa – The Math4CCR Revolution



As climate change intensifies, mathematical modelling and Artificial Intelligence (AI) are becoming vital tools for resilience planning. Together, these approaches—referred to as mathematical AI, enable more integrated climate risk assessments, improved predictions, and innovative solutions for adaptation and mitigation.

The project Leveraging Mathematical Sciences for Climate Resilience Solutions in Africa (Math4CCR) seeks to strengthen Africa's capacity in mathematical AI by equipping researchers and policymakers with the skills and tools needed to generate actionable climate solutions. The project's vision is to mainstream mathematical sciences in climate resilience planning while closing capacity and gender gaps in the field.



Math4CCR is structured in four phases:

- **Scoping:** Mapping existing mathematical AI tools, models, and frameworks, alongside identifying capacity gaps.
- **Training:** Delivering e-learning modules, fellowships, mini-grants, and internships to develop next-generation expertise.
- **Institutionalisation:** Creating a regional master's curriculum and advancing uptake through policy labs.
- **Community Building:** Driving knowledge-sharing via webinars, side events, and annual conferences.

By the project's conclusion, ARIN anticipates a significant enhancement in the use of mathematical sciences for climate planning and decision-making across Africa. The initiative will also help bridge the gender gap in STEM fields, fostering an inclusive community of practice that supports innovative, evidence-based climate resilience solutions.



The background features a warm, orange-to-yellow gradient at the top, transitioning into a dark blue gradient at the bottom. Two dark silhouettes of human heads are positioned in the center, facing each other. Overlaid on the entire image is a network of thin, white lines connecting small, glowing white dots, creating a digital or neural network aesthetic.

07 POLICY ENGAGEMENTS AND ADVOCACY

Policy Engagements and Advocacy

The 4th ARIN Annual Conference

The 4th Annual ARIN International Conference focused on Climate Change and Health, themed “*Bridging Knowledge Gaps: Promoting Transdisciplinarity for Climate and Health Resilience*” highlighted the pressing need for multi-sectoral and multi-level collaboration to address the climate crisis and its extensive health implications. The conference served as a vibrant platform for sharing cutting-edge research, policy innovations, and collaborative initiatives. Participants explored how various sectors contribute to climate change and health impacts, while identifying strategies to safeguard health systems and vulnerable communities. Structured around diverse sub-themes, the conference enabled scholars to showcase their research, interact with experts, and forge strategic partnerships.

A central call to action was made to move beyond siloed approaches and adopt transdisciplinary collaboration, bringing together diverse fields of knowledge to tackle the complex, interconnected challenges posed by climate change. The conference emphasized that isolated efforts often lead to fragmented understanding, missed opportunities for synergy, ineffective policymaking, and limited capacity development.

By promoting integrated, context-specific, and innovative solutions, the ARIN Conference reinforced its commitment to building healthier, more resilient communities across Africa and globally.

Building Climate Resilience of the Urban Poor (BCRUP)

In 2024, the African Research and Impact Network (ARIN) played a central role in advancing the *Building Climate Resilience of the Urban Poor (BCRUP)* initiative. On May 31, ARIN participated in a high-level virtual meeting that marked a significant step toward empowering African nations to protect vulnerable urban communities from the growing impacts of climate change.

Convened by Kenya’s Ministry of Lands, Public Works, Housing and Urban Development (MLPW&HUD) in collaboration with United Cities and Local Governments of Africa (UCLG Africa), the meeting brought together focal points from BCRUP pilot countries across the continent. ARIN contributed its expertise to strengthen collaboration and shape a robust framework and action plan for program implementation.

“

“The BCRUP initiative presents a critical opportunity to address the very real challenges faced by Africa’s urban poor communities,” noted Dr. Joanes Atela, Executive Director of ARIN. “At ARIN, we are committed to leveraging our research and knowledge management capabilities to empower these communities and build resilience for a more sustainable future.”

”

During the meeting, Dr. Assouhan Jonas, ARIN's Lead Researcher, presented a detailed vulnerability assessment methodology to be applied by participating countries. This tool will provide a deeper understanding of the unique risks faced by urban poor communities, paving the way for more targeted and impactful interventions.

BCRUP's emphasis on knowledge sharing and capacity building strongly aligns with ARIN's mission. Beyond its technical contributions, ARIN will serve as a knowledge hub, facilitating the exchange of best practices and lessons learned throughout the program's implementation.

The initiative represents a milestone in protecting Africa's urban poor from climate-related risks. Through active participation, technical leadership, and knowledge sharing, ARIN continues to stand at the forefront of efforts to build resilience and promote sustainable urban futures across the continent.

Additionally, ARIN participated in the Pre-Mashujaa Day Exhibition organized by the Kenya Permanent Mission to UN-Habitat, where the team contributed to technical discussions on Affordable Housing (Boma Yangu) and Building Climate Resilience of the Urban Poor (BCRUP). The exhibition provided a valuable platform to showcase synergies across initiatives, engage with stakeholders, and contribute to ongoing conversations on affordable housing solutions and climate resilience in Kenya.



Dr. Joanes Atela speaking at the Boma Yangu launch

Strengthening Climate Adaptation Data through Adaptation Insights

On October 16, 2024, ARIN participated in the Adaptation Insights Inception Workshop at ILRI, Nairobi, organized by the Alliance Bioversity International-CIAT and funded by the Gates Foundation. The initiative seeks to improve the availability, quality, and use of climate adaptation data across Africa, with a strong focus on agricultural resilience.



Representing ARIN, Leah Aoko (Lead for LAMA) and Dr. Humphrey Agevi shared lessons from ARIN's work on assessing adaptation effectiveness in East Africa. They highlighted efforts to establish integrated indicators across agriculture, water management, nature-based solutions, and disaster risk reduction. ARIN's Locally Led Adaptation Metrics for Africa (LAMA) was presented as a pioneering approach, blending national and community-level indicators to track progress while informing climate reporting frameworks such as the Global Goal on Adaptation and National Adaptation Plans.

The workshop addressed Africa's persistent data fragmentation and called for cohesive data-sharing networks to support decision-making. By contributing knowledge and tools, including through LAMA and the Math4CCR project, ARIN reinforced its role as a key partner in advancing evidence-based adaptation. These efforts will be critical in shaping policies, securing finance, and ensuring adaptation solutions are both inclusive and locally impactful.



Advancing Locally Led Adaptation through Climate Finance

ARIN participated in the Adaptation Insights Inception Workshop on October 16, 2024, at ILRI's Vercoe Auditorium in Nairobi. Convened by the Alliance Bioversity International–CIAT and funded by the Gates Foundation, the workshop launched the Adaptation Insights project, which seeks to improve the availability, quality, and use of climate adaptation data to strengthen agricultural resilience in Africa. Representing ARIN, Leah Aoko and Dr. Humphrey Agevi shared lessons from ARIN's initiatives, including the *Locally Led Adaptation Metrics for Africa (LAMA)* project, which is pioneering integrated indicators for agriculture, water management, nature-based solutions, and disaster risk reduction.

The workshop addressed challenges of data fragmentation that have hindered effective adaptation planning across Africa. Stakeholders discussed the need for cohesive, standardized data platforms that capture on-the-ground realities and provide timely insights for governments, local authorities, and the private sector. ARIN's contributions highlighted the importance of adaptation metrics tailored to both national and sub-national contexts, enabling countries to track progress toward the Global Goal on Adaptation and National Adaptation Plans while also supporting community-level action.



By advancing evidence-based approaches, the Adaptation Insights project will help shape more effective policies, mobilize funding, and strengthen Africa's role in global climate negotiations. ARIN's active engagement underscores its leadership in building Africa's climate resilience through research, knowledge-sharing, and innovative metrics that ensure adaptation solutions are both data-driven and locally relevant.

Locally Led Adaptation at Step Change Webinar Series

On August 1, 2024, ARIN participated in the Step Change webinar series, co-hosted by the International Development Research Centre (IDRC) and the Ministry of Foreign Affairs of the Netherlands. The opening session, *"Grant-makers, Facilitators, and Communicators: Exploring the Many Roles of Intermediaries in Locally Led Adaptation (LLA)"*, featured ARIN's Executive Director, Dr. Joanes Atela, alongside other distinguished panelists.

Dr. Atela highlighted findings from ARIN's Locally Led Adaptation Metrics for Africa (LAMA) project, emphasizing the critical gap between local-level indicators and those embedded in National Adaptation Plans. He introduced the LAMA platform, designed to consolidate adaptation indicators across Africa and foster collaboration, capacity building, and knowledge exchange. By aligning social and financial dimensions of adaptation, the platform equips communities with tools to shape sustainable, locally driven resilience strategies and informs global processes such as the Global Goal on Adaptation and the Global Stocktake.

The session underscored the pivotal role of intermediary organizations in channeling resources, building trust, and enabling effective local leadership in adaptation. Through initiatives like Step Change, international partners are investing in knowledge brokers such as ARIN to ensure that locally led adaptation becomes central to Africa's resilience agenda.

ARIN at the IPCC AR7 Pre-Scoping Event

ARIN was represented at the IPCC AR7 Pre-Scoping Meeting held from November 30 to December 2, 2024, in Libreville, Gabon. Dr. Humphrey Agevi, Senior Research Associate at ARIN, actively contributed to shaping the scope and direction of the forthcoming IPCC Seventh Assessment Report (AR7).



ARIN's inputs highlighted its pioneering work on adaptation, equitable transitions, and the potential of artificial intelligence in advancing climate action. By bringing forward perspectives on integrating AI-driven insights into adaptation strategies, ARIN underscored the importance of innovative, inclusive, and evidence-based approaches in global climate assessments. The recognition of these contributions affirmed ARIN's role as a thought leader in climate research and policy advocacy across Africa and beyond.

ARIN Joins Decarbonization Efforts in Kenya's Health Sector



The Africa Research and Impact Network (ARIN) recently joined high-level discussions on decarbonizing Kenya's healthcare sector, convened by the Embassy of the Kingdom of the Netherlands. The event brought together policymakers, healthcare professionals, and environmental experts to explore innovative strategies for reducing emissions and building a sustainable, climate-resilient health system. Representing ARIN, Dr. Humphrey Agevi, Mr. Washington Kanyangi, and Ms. Ann Irungu underscored the importance of community-centered approaches, noting that engaging marginalized groups ensures solutions are both equitable and sustainable.

Kenya has demonstrated strong commitment through the Climate Change and Health Strategy 2024–2029, which prioritizes carbon reduction, resilient health systems, and strengthened governance. Key opportunities discussed included adopting circular economy principles, reusing and recycling medical equipment, improving waste management, and integrating clean energy technologies to reduce emissions across the sector. International partners, including the Netherlands, are supporting these efforts with technical expertise and resources to accelerate Kenya's green healthcare transition.

ARIN's engagement reflects its mission to bridge research, policy, and practice in tackling climate and health challenges. By championing bottom-up, evidence-based approaches, ARIN continues to play a pivotal role in shaping transformative solutions that safeguard both communities and the environment while advancing sustainable healthcare systems in Africa.



ARIN and UKCEH Team Up to Turn Data into Action

ARIN participated in the Environmental Science for Climate Resilience Seminar on October 9, 2024, in Nairobi, co-led by the UK Centre for Ecology and Hydrology (UKCEH) and Kenyan scientific institutions. The seminar, part of a broader UKCEH delegation visit, brought together over 50 participants from 20 organizations, including universities, research institutions, and private sector entities, to discuss innovative environmental solutions and strengthen collaborations in climate, biodiversity, and water management.

ARIN's delegation, led by Dr. Joanes Atela, Executive Director, alongside Akinyi J. Eurallyah and Dr. Humphrey Agevi, contributed to discussions on advancing biodiversity knowledge, managing forest genetic resources, strengthening freshwater systems, and improving weather predictability. Dr. Atela emphasized the importance of embedding policy recommendations into scientific research to ensure evidence translates into actionable solutions.

The visit also deepened partnerships between UKCEH and Kenyan institutions through bilateral meetings with UNEP, UNESCO, AfDB, and others, and by renewing Memoranda of Understanding with KEFRI, KMFRI, and SEKU. In follow-up discussions, ARIN highlighted its flagship initiatives, including the Africa-led Adaptation Community of Practice, the Africa Policy Fellowship Programme, and Evidence Synthesis and Translation, agreeing with UKCEH to prioritize collaboration on capacity building and science-policy engagement.



Empowering Grassroots Communities through ARIN-GIC Collaboration

ARIN has partnered with the Grassroot Impact Center (GIC) to strengthen the capacity of local communities to design and lead climate adaptation solutions. This collaboration reflects ARIN's commitment to ensuring that climate action is not only data-driven but also rooted in the lived experiences and priorities of communities on the frontlines of climate change.

Through joint initiatives such as the Locally Led Adaptation Metrics for Africa (LAMA) Project, ARIN is engaging GIC to bridge research and practice at the grassroots level. Together, the organizations are equipping communities with tools, knowledge, and platforms to generate locally relevant evidence, shape policy discussions, and inform adaptation investments. By involving households, farmers, women's groups, and local leaders in data collection and dialogue, the partnership fosters inclusivity and builds a sense of ownership in adaptation processes.



This engagement goes beyond research, it empowers communities to be active agents of change. By amplifying local voices and aligning them with national and global climate agendas, the ARIN–GIC partnership is paving the way for bottom-up, equitable, and sustainable resilience strategies across Africa.





08 CAPACITY
BUILDING

Capacity Building

The Climate Adaptation Finance Professional Training Program

In 2024, ARIN, in collaboration with the Frankfurt School of Finance and Management, Makerere University Business School, IFAD, and the Royal Danish Embassy in Kampala, launched registrations for the Climate Adaptation Finance Professional course. This pioneering initiative is designed to strengthen the capacity of financial professionals in East Africa with the specialized knowledge and tools needed to address the growing challenges of climate adaptation finance.

The course adopts a Blended Learning approach, combining e-learning modules with in-person sessions in Kampala. It provides participants with practical insights into climate finance frameworks, stakeholder integration, and methodologies for assessing adaptation measures, bridging critical knowledge gaps and elevating the role of financial institutions in fostering climate-resilient development.

Targeted at senior bankers, insurance executives, regulators, and consultants, the program equips participants with globally recognized skills and certification, positioning them to influence adaptation strategies within the financial sector. Applications closed on August 15, 2024, with the program running from September to December, culminating in a practical, hands-on training session in Kampala in early 2025.

Through this initiative, ARIN and partners are fostering a community of finance professionals equipped to drive sustainable and resilient change across East Africa's financial landscape.

Empowering Grassroot Champions on Climate Change Adaptation

The Lake Region Economic Bloc (LREB) in Kenya, comprising 14 counties, is highly vulnerable to climate change, with agriculture and fisheries-dependent communities facing declining yields, food insecurity, and rising poverty. To address these challenges, ARIN, in partnership with the Grassroot Impact Center (GIC) and Masinde Muliro University of Science and Technology (MMUST), convened a one-week training in Kisumu County under the theme *"Empowering Grassroot Champions on Climate Change Adaptation."*



The training equipped over 200 participants with practical skills in climate science, adaptation strategies, climate finance, gender inclusion, and the role of technology in resilience-building. Using participatory approaches, grassroots champions developed community-driven solutions and are now actively engaged in the Locally-Led Adaptation Metrics for Africa (LAMA) project, funded by IDRC.

This initiative not only strengthens local capacity to measure and implement effective adaptation but also ensures that community priorities inform national and international climate policies. Lessons from Kenya will inform similar work in Benin, amplifying the impact of LLA across Africa.

Fuelling the Future: ARIN & UCL's Accountable Adaptation Fellowship

In 2024, ARIN partnered with University College London to launch a mini-grants programme under the Accountable Adaptation initiative. The programme supports early- to mid-career researchers from the Global South to advance research and practice on accountability in climate adaptation.

Seven fellows from diverse African countries and contexts are leading innovative projects that test and document new ways of understanding and strengthening accountability in adaptation. Their work builds on the Accountable Adaptation Working Paper, *“Opening up Accountability in Adaptation: A Framework for Research and Action,”* and contributes directly to the initiative’s broader goal of embedding accountability within adaptation planning and practice.

Through this fellowship, ARIN and partners are fostering a new generation of researchers equipped to generate evidence, share insights, and shape adaptation processes that are transparent, inclusive, and responsive to the needs of vulnerable communities.

Read more about each fellow and their projects [here](#).

The ARIN Africa Science-Policy Mini-grants and Mentorship Scheme

There is broad consensus that an evidence-informed development agenda is central to Africa’s long-term, inclusive growth. Both Agenda 2063 and the Science, Technology and Innovation Strategy for Africa (STISA) 2024 call on countries to increase investment in research and development to at least 1% of GDP, recognizing the need to strengthen technical expertise, research infrastructure, innovation, and policy environments that support an innovation-driven, knowledge-based economy.

Despite progress, research across the continent remains fragmented, with challenges in capacity retention, in-continent learning, researcher networking, and African-led publishing. Many scholars face persistent barriers to securing domestic and international funding for empirical, policy-relevant research.

To respond, ARIN established the Africa Evidence-Informed Policy Fellowship Program, which convenes fellows to co-generate knowledge and share lessons across contexts. Building on this, ARIN launched the Mini-Grant and Mentorship Scheme to directly address the funding gaps limiting African scholars’ ability to pursue demand-driven, contextualized research.



The scheme provides grants of USD 2,000–5,000 alongside structured mentorship, enabling fellows to collect robust data, develop high-quality case studies, and contribute to African-led knowledge products. These outputs feed into special issues and book volumes showcased during the biennial ARIN Africa Research-Policy Fellows Assembly, including the upcoming November 2024 event in Nairobi.

Objectives of the Mini-Grant and Mentorship Scheme

- **Strengthen Evidence-Based Policymaking:** Deepen understanding of the science–policy interface and identify gaps in integrating evidence into decision-making.
- **Cultivate a Community of Evidence Leaders:** Build a cohort of African researchers and policymakers who champion evidence use across the continent.
- **Enhance African Knowledge Production:** Generate African-led publications that inform development agendas aligned with continental strategies.

Key Activities

- **Capacity Building:** Webinars and workshops, including a Research Publishing Academy with Taylor & Francis, to equip young researchers with academic publishing skills.
- **Publication Opportunities:** Development of African-led book series and special issues with dedicated editorial boards.
- **Researcher Engagement:** Co-branded interactive sessions and collaborative strategies to amplify the visibility and impact of African research.

ARIN aims to grow a USD 5 million mini-grants portfolio to sustainably support early-career researchers. This program is made possible through the generous contributions of donors, private sector partners, and philanthropic supporters.





COP29

Baku
Azerbaijan

09 ARIN AT
COP 29

ARIN at COP 29

At the 29th Conference of Parties (COP29), the Africa Research and Impact Network (ARIN) actively contributed to advancing global adaptation discourse, with a strong focus on adaptation metrics, transboundary climate risks, and resilience for vulnerable communities.

Advancing the UAE Belem Work Programme

ARIN participated in a high-level side event hosted by the International Platform on Adaptation Metrics (IPAM), contributing to global efforts to operationalize adaptation metrics under the UAE Belem Work Programme. Representing ARIN, Charles Tonui shared critical insights on measuring adaptation within the food sector, informed by expert feedback from IPAM and ARIN's ongoing research.

- **Date:** Saturday, November 16, 2024
- **Time:** 11:00 AM – 12:15 PM
- **Location:** Moroccan Pavilion, Blue Zone

Engagement in INBOA Events

ARIN also engaged in a series of events convened by the International Network of Basin Organizations (INBOA), spotlighting collaboration, boundary work, and transboundary climate risks:

- **Showcasing Tools for Municipal Adaptation and the Regions4 Initiative**
Friday, November 15, 2024 | 4:30 – 5:30 PM | Canada Pavilion
- **Private Networking for Adaptation Partners**
Monday, November 18, 2024 | 6:00 – 8:00 PM | SHARE Hub
- **Panel on Subnational Actors and Transboundary Climate Risks**
Tuesday, November 19, 2024 | 9:00 – 10:00 AM | Climate, Peace & Resilience Pavilion

Building Climate Resilience with the Urban Poor

ARIN contributed to the High-Level Meeting on Building Climate Resilience with the Urban Poor (BCRUP), where discussions focused on consolidating the Regional Readiness Project and mobilizing resources for implementation.

- **Date:** Wednesday, November 13, 2024
- **Time:** 2:00 – 3:30 PM
- **Location:** WGEO Pavilion





10 STAFF WELLNESS AND TEAM COHESION

Staff Wellness and Team Cohesion

At ARIN, we recognize that the well-being of our staff is central to sustaining creativity, productivity, and impact across our programs. In 2024, the organization placed a renewed emphasis on staff wellness, fostering a supportive work environment that promotes balance, collaboration, and personal growth.

As part of its commitment to fostering a strong organizational culture, ARIN organized team-building activities throughout the year to enhance cohesion and support staff well-being.



The year concluded with an end-of-year retreat in Mombasa in December, bringing together all staff for relaxation, team bonding, reflection on achievements, and forward planning.

During the retreat, the team:

- Reflected on 2024 achievements, celebrating milestones such as successful program delivery, impactful partnerships, and contributions to continental and global climate discourse.
- Candidly addressed shortcomings, identifying challenges encountered during the year, including resource constraints, capacity gaps, and operational hurdles.
- Forged a shared vision for 2025, co-developing a set of goals to strengthen organizational systems, deepen partnerships, and expand the reach and impact of ARIN's initiatives.

Beyond structured discussions, staff engaged in wellness activities, team-building exercises, and informal interactions that deepened relationships and reinforced a strong sense of community. The retreat also highlighted the importance of mental health, resilience, and work–life balance, equipping the team with strategies to sustain a positive organizational culture.

By investing in wellness initiatives and creating space for honest reflection and goal setting, ARIN is nurturing a motivated, resilient, and forward-looking team ready to drive transformative impact in 2025 and beyond.

Awards and Recognition

Through out the year, ARIN and its team members were honored with several prestigious recognitions, underscoring the organization's growing influence in research, innovation, and leadership across Africa and beyond. These accolades celebrated both individual excellence and collective contributions to advancing ARIN's mission.

International and National Recognitions

- Dr. Joanes Atela, ARIN's Executive Director, received appointment to three prestigious and advisory positions. These include;
 - 1.Appointment as the Chair of African Climate Change and Health Alliance.
 - 2.Appointment as a member to the steering committee, John Hopkins Fellowship on Climate Change and Health.
 - 3.Appointment as a member of the Adaptation Committee at the Bonn Climate Change Conference.
 - 4.Appointment as a member of the Global Forum on Food Security and Nutrition (FSN Forum).
- Emily Bolo was awarded the Winner, Africa Queen of Energy Award at the 8th Africa Queen of Energy Awards. This national-level recognition celebrated her outstanding leadership and excellence in the energy sector.
- Victoria Chengo, ARIN's MEL Manager, was invited as a keynote speaker to deliver a lecture on "Sustainability in Projects and Project Management" for the UN Ocean Decade's self-paced online course "Co-Design for the Ocean Decade." Hosted on the Ocean Teacher Global Academy (OTGA) platform, the course introduces the fundamentals of co-design in ocean science research for beginners worldwide.



Institutional Recognitions

- Nancy Mutwii received ARIN's Employee of the Year Award in recognition of her exceptional dedication and contributions to the organization's goals.
- Edna Kowenje received the Runner-Up for the Employee of the Year Award, reflecting her significant role in fostering organizational success.
- Ann Synthia Wanjiru was recognized as the Early Career Researcher of the Year.
- Dr. Humprey Agevi received special recognition for research excellence.
- Amon Mtunji was awarded special recognition for his exemplary administrative performance.

These achievements not only highlight the excellence of ARIN's staff but also reinforce the organization's leadership in promoting research-driven solutions, capacity development, and innovation across Africa.





CHECK IN CASE BEFORE CHECKING OUT

11 2024 PUBLICATIONS

2024 Publications

Blogs

- 1.ARIN. (2024, June 5). A global call to enhance restoration efforts to combat desertification and land degradation. Africa Research & Impact Network. <https://www.arin-africa.org/2024/06/05/a-global-call-to-enhance-restoration-efforts-to-combat-desertification-and-land-degradation/>
- 2.ARIN. (2024, June 5). The role of technology in environmental protection. Africa Research & Impact Network. <https://www.arin-africa.org/2024/06/05/the-role-of-technology-in-environmental-protection/>
- 3.ARIN. (2024, July 3). Africa Research and Impact Network (ARIN) champions access to climate finance for local adaptation in Africa. Africa Research & Impact Network. <https://www.arin-africa.org/2024/07/03/africa-research-and-impact-network-arin-champions-access-to-climate-finance-for-local-adaptation-in-africa/>
- 4.ARIN. (2024, July 16). Advancing evidence-informed policymaking (EIP) across Africa. Africa Research & Impact Network. <https://www.arin-africa.org/2024/07/16/advancing-evidence-informed-policymaking-eip-across-africa/>

News Briefs

- 1.ARIN. (2024, June 10). ARIN leads discussions on stakeholder engagement at the African Population Cohort Consortium (APCC) inaugural meeting. Africa Research & Impact Network. <https://www.arin-africa.org/2024/06/10/ar-in-leads-discussions-on-stakeholder-engagement-at-the-african-population-cohort-consortium-apcc-inaugural-meeting/>
- 2.ARIN. (2024, June 10). ARIN facilitates risk agreement workshop in Dar es Salaam's Mianzini Ward – Tomorrow Cities Project. Africa Research & Impact Network. <https://www.arin-africa.org/2024/06/10/ar-in-facilitates-risk-agreement-workshop-in-dar-es-salaams-mianzini-ward/>
- 3.ARIN. (2024, June 14). ARIN's Executive Director co-leads the launch of BioCAM4 Project (2024–2026) at IDOS, Bonn Germany at the sides of the 60th SBI/SABSTA conference. Africa Research & Impact Network. <https://www.arin-africa.org/2024/06/14/arins-director-co-leads-biocam4-launch-at-idos-planning-meeting/>
- 4.ARIN. (2024, June 26). ARIN interviews NEMA Kenya on KCCAP effectiveness, highlighting water security innovations. Africa Research & Impact Network. <https://www.arin-africa.org/2024/06/26/ar-in-interviews-nema-kenya-on-kccap-effectiveness-highlighting-water-security-innovations/>
- 5.ARIN. (2024, September 6). CAPCHA platform launches to tackle Africa's climate and health challenges. Africa Research & Impact Network. <https://www.arin-africa.org/2024/09/06/capcha-platform-launches-to-tackle-africas-climate-and-health-challenges/>
- 6.ARIN. (2024, December 11). ARIN participates in decarbonization efforts in Kenya's health sector. Africa Research & Impact Network. <https://www.arin-africa.org/2024/12/11/ar-in-participates-in-decarbonization-efforts-in-kenyas-health-sector/>



Journal Articles

1. Wachira, J., Atela, J., Stacey, P., & Outa, G. (2024). NGO-led community-based conservation: A new frontier of territorialization with implications for pastoralists' land tenure and climate change adaptation. *Land*, 13(6), 740. ARIN, University of Nairobi, & Roskilde University. <https://doi.org/10.3390/land13060740>
2. ARIN. (2024). Searching for synergies for low emission development: The case for the dairy subsector in Kenya. *Climatic Change*. <https://doi.org/10.1007/s10113-024-02275-8>
3. Atela, J., Bolo, E., Agevi, H., Muindi, K., Thiam, S., Gordon, E., Irungu, A., Gitau, H., & ARIN. (2024). Stakeholder analysis towards unpacking communities of practice for transdisciplinary research and action in climate change and health in Africa. *Frontiers in Human Dynamics*. <https://www.frontiersin.org/articles/10.3389/fhumd.2024.1454597/full>
4. Okeke-Ogbuafor, N., Atela, J., Nantongo, M. G., Aoko, L., Tonui, C., Rajah, E., Osamba, J., Odongo, J. O., Atchade, A. J., Gray, T., & ARIN. (2024). Locally led adaptation metrics for Africa: A framework for building resilience in smallholder farming sectors. *Frontiers in Climate*, 6, 1429462. <https://doi.org/10.3389/fclim.2024.1429462>

Reports

1. Tomorrow Cities & ARIN. (2024). Shrestha, N., Gentile, D. R., Deshpande, D. T., Ozer, D. E., Amatya, S., & Aoko, L. Module 4: Risk agreement workbook. TCDSD Risk Agreement Report. https://tomorrowcities.org/wp-content/uploads/2024/09/Workbook_DraftM4_TC_20240605.pdf
2. Sibanda, D., Odoom, E. S., Kanyangi, W., Apuryinga, A. A., Methner, N., Welch, E., Eakin, H., Ma, J., Yogya, Y., Magreta, R., & ACAMI & ARIN. (2024). Meso-level organizations as key actors in effective and equitable climate change adaptation interventions in Africa: A landscape analysis. ACAMI-ARIN Report. <https://www.arin-africa.org/wp-content/uploads/2024/10/ACAMI-LANDSCAPE-ANALYSIS-PROJECT-REPORT-July-9-2024-1.pdf>

Book Chapters

1. Aoko, L., Kanyangi, W., et al. (2024). Integrating nature-based solutions in cities from the Global South: Towards participatory and inclusive urban planning processes – The case of Nairobi. [Book chapter].





**12 2024
SUPPORTERS**

2024 Supporters

1. Funding Partners / Donors

- Wellcome Trust – supported the Climate & Health consultation study.
- International Development Research Centre (IDRC) – funded the Locally-Led Adaptation Metrics for Africa (LAMA) project.
- UK Foreign, Commonwealth & Development Office (FCDO) – supported the East Africa adaptation effectiveness study.
- Bill & Melinda Gates Foundation – funded the Adaptation Insights project.
- IFAD (International Fund for Agricultural Development) – supported Climate Adaptation Finance Professional course.
- Royal Danish Embassy in Kampala – supported the Climate Adaptation Finance Professional course.
- Frankfurt School of Finance and Management – co-funder & partner in the climate finance training.

2. Research & Academic Partners

- Johns Hopkins University – co-developed the Climate & Health Fellowship, global collaboration.
- African Population and Health Research Center (APHRC) – co-lead of Africa Climate & Health Centre of Excellence.
- University of Nairobi (UoN) – partner in Leveraging Mathematical Sciences for Climate Resilience Solutions in Africa (Math4CCR)
- Edinburgh University (EoU) – leading partner under Tomorrow's Cities hub.
- University College London (UCL) – partner in Accountable Adaptation fellowship.
- University of Copenhagen – partner in JUCAN (Nature-Based Climate Solutions).
- Masinde Muliro University of Science & Technology (MMUST) – grassroots adaptation training in Kisumu.
- Makerere University Business School (Uganda) – climate finance training partner.
- School of Gender & Women's Studies, Makerere University – part of Africa LEEPS collaboration.
- African Institute for Health Policies and Health Systems, Nigeria – Africa LEEPS collaborator.
- UK Centre for Ecology & Hydrology (UKCEH) – climate resilience seminar & partnerships in biodiversity/water research.
- Taylor & Francis Group – strategic partnership for publishing (mini-grants, research academy, co-publications).

3. Civil Society & Think Tank Partners

- Grassroot Impact Center (GIC) – partnered on LAMA and grassroots champion training in Kisumu.
- Tomorrow's Cities Research Hub (international consortium) – collaboration on Nairobi hub & TCDSE.
- World Resources Institute (WRI) – research on Nairobi flood vulnerability.
- United Cities and Local Governments of Africa (UCLG Africa) – co-convened BCRUP initiative.

4. Government & Multilateral Partners

- Kenya's Ministry of Lands, Public Works, Housing and Urban Development – collaboration under BCRUP.
- UN-Habitat – technical and action planning workshops under Tomorrow's Cities.
- County Government of Nairobi – partner on Tomorrow's Cities
- County Government of Nakuru – cross-city learning activities under Tomorrow's Cities.
- UNEP, UNESCO, AfDB – engaged via UKCEH partnership dialogues.
- Embassy of the Kingdom of the Netherlands (Kenya) – convened healthcare decarbonization dialogue.



Contact Us



www.arin-africa.org



+254746130873



info@arin-africa.org



[arin_africa](#)



[Africa Research and Impact Network](#)



[The Africa Research and Impact Network](#)



ACK Gardens House, 1st Floor,
Bishop Road, 1st Ngong Ave, Upperhill, Nairobi.